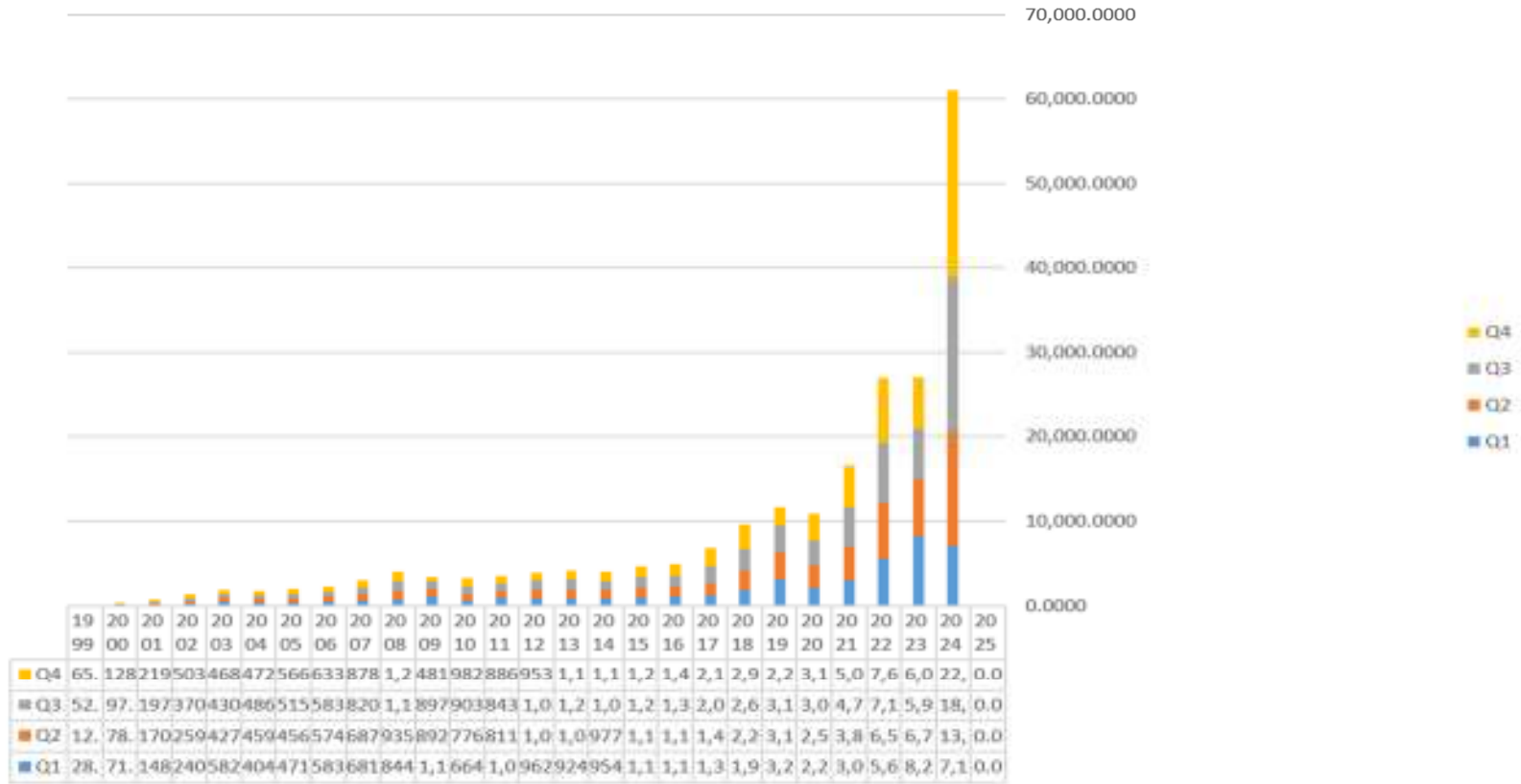


NVDA Sales (Source SEC 10K's and 10Q's)

Nvidia

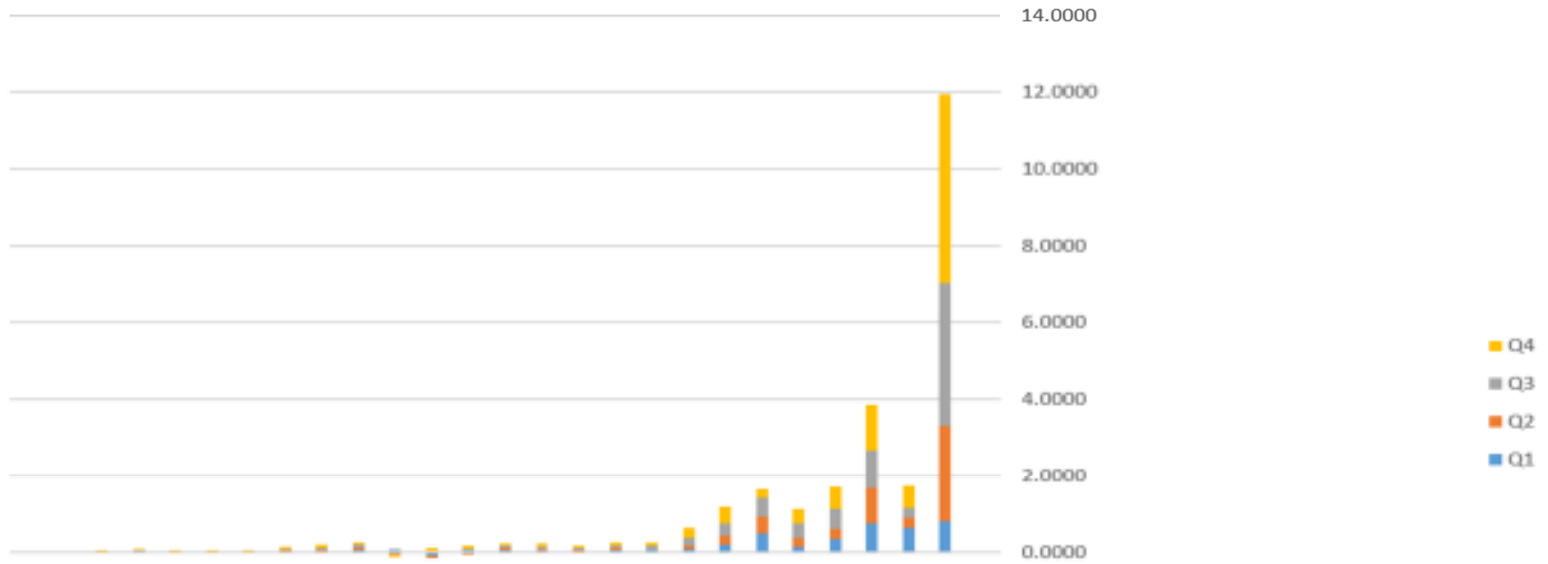


NVDA Sales detail

Sum of Sales Quarter					
Year	Q1	Q2	Q3	Q4	Grand Total
1999	28.2630	12.1340	52.3030	65.5370	158.2370
2000	71.0180	78.0170	97.0150	128.4550	374.5050
2001	148.4830	170.3980	197.6670	219.7960	736.3440
2002	240.9320	259.2590	370.2410	503.6880	1,374.1200
2003	582.9050	427.2850	430.3040	468.9530	1,909.4470
2004	404.9830	459.7740	486.0690	472.1190	1,822.9450
2005	471.9050	456.0610	515.5910	566.4760	2,010.0330
2006	583.8460	574.8120	583.4150	633.6140	2,375.6870
2007	681.8070	687.5190	820.5720	878.8730	3,068.7710
2008	844.2800	935.2530	1,115.5970	1,202.7300	4,097.8600
2009	1,153.3880	892.6760	897.6550	481.1400	3,424.8590
2010	664.2310	776.5200	903.2060	982.4880	3,326.4450
2011	1,001.8130	811.2080	843.9120	886.3760	3,543.3090
2012	962.0390	1,016.5170	1,066.1800	953.1940	3,997.9300
2013	924.8770	1,044.2700	1,204.1100	1,106.9020	4,280.1590
2014	954.7390	977.2380	1,053.9670	1,144.2180	4,130.1620
2015	1,102.7870	1,102.8240	1,225.3820	1,250.5140	4,681.5070
2016	1,151.0000	1,153.0000	1,305.0000	1,401.0000	5,010.0000
2017	1,305.0000	1,428.0000	2,004.0000	2,173.0000	6,910.0000
2018	1,937.0000	2,230.0000	2,636.0000	2,911.0000	9,714.0000
2019	3,207.0000	3,123.0000	3,181.0000	2,205.0000	11,716.0000
2020	2,220.0000	2,579.0000	3,014.0000	3,105.0000	10,918.0000
2021	3,080.0000	3,866.0000	4,726.0000	5,003.0000	16,675.0000
2022	5,661.0000	6,507.0000	7,103.0000	7,643.0000	26,914.0000
2023	8,288.0000	6,704.0000	5,931.0000	6,051.0000	26,974.0000
2024	7,192.0000	13,507.0000	18,120.0000	22,103.0000	60,922.0000
2025	0.0000	0.0000	0.0000	0.0000	0.0000
<b>Grand Total</b>	<b>44,863.2960</b>	<b>51,778.7650</b>	<b>59,883.1860</b>	<b>64,540.0730</b>	<b>221,065.3200</b>

NVDA EPS

Nvidia



	1999	2000	2001	2002	2003	2004	2005	2006	2007	2008	2009	2010	2011	2012	2013	2014	2015	2016	2017	2018	2019	2020	2021	2022	2023	2024	2025
Q4	0.0	0.0	0.0	0.0	0.0	0.0	0.0	0.0	0.0	0.0	0.0	0.0	0.0	0.0	0.0	0.0	0.0	0.0	0.2	0.4	0.2	0.3	0.5	1.1	0.5	4.9	0.0
Q3	0.0	0.0	0.0	0.0	0.0	0.0	0.0	0.0	0.0	0.0	0.0	0.0	0.0	0.0	0.0	0.0	0.0	0.1	0.2	0.3	0.4	0.3	0.5	0.9	0.2	3.7	0.0
Q2	0.0	0.0	0.0	0.0	0.0	0.0	0.0	0.0	0.0	0.0	0.0	0.0	0.0	0.0	0.0	0.0	0.0	0.0	0.1	0.2	0.4	0.2	0.2	0.9	0.2	2.4	0.0
Q1	0.0	0.0	0.0	0.0	0.0	0.0	0.0	0.0	0.0	0.0	0.0	0.0	0.0	0.0	0.0	0.0	0.0	0.0	0.0	0.1	0.4	0.1	0.3	0.7	0.6	0.8	0.0

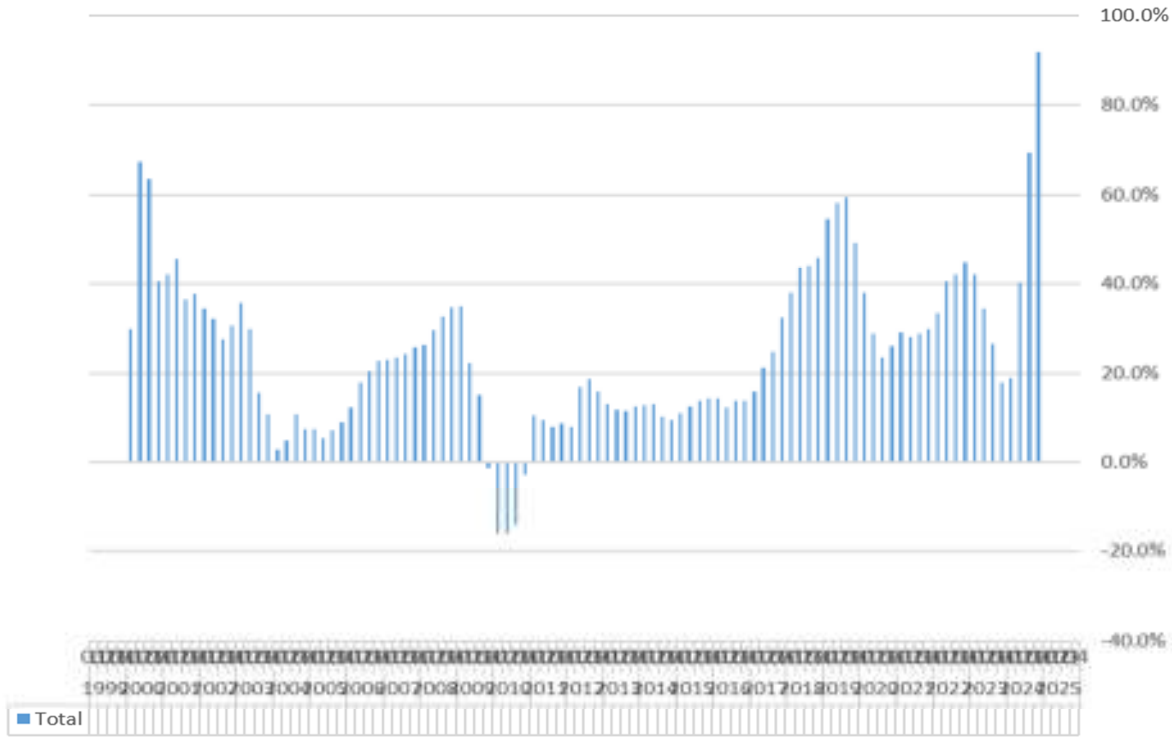
(2.0000)

NVDA EPS Detail

Sum of ShrEarnAdj	Quarter					
Year	Q1	Q2	Q3	Q4	Grand Total	
1999	0.0000	0.0000	0.0000	0.0000	0.0000	
2000	0.0038	0.0040	0.0060	0.0083	0.0221	
2001	0.0098	0.0117	0.0146	0.0063	0.0423	
2002	0.0129	0.0163	0.0217	0.0058	0.0567	
2003	0.0392	0.0025	(0.0267)	0.0300	0.0450	
2004	0.0100	0.0117	0.0033	0.0108	0.0358	
2005	0.0100	0.0025	0.0125	0.0225	0.0475	
2006	0.0300	0.0342	0.0300	0.0433	0.1375	
2007	0.0400	0.0367	0.0450	0.0900	0.2117	
2008	0.0550	0.0717	0.0950	0.0425	0.2642	
2009	0.0750	(0.0550)	0.0275	(0.0600)	(0.0125)	
2010	(0.0925)	(0.0475)	0.0475	0.0625	(0.0300)	
2011	0.0575	(0.0625)	0.0375	0.0750	0.1075	
2012	0.0550	0.0625	0.0725	0.0450	0.2350	
2013	0.0250	0.0475	0.0825	0.0700	0.2250	
2014	0.0325	0.0400	0.0500	0.0625	0.1850	
2015	0.0600	0.0550	0.0775	0.0875	0.2800	
2016	0.0600	0.0125	0.1100	0.0875	0.2700	
2017	0.0825	0.1000	0.2075	0.2525	0.6425	
2018	0.1975	0.2300	0.3325	0.4450	1.2050	
2019	0.4950	0.4400	0.4925	0.2300	1.6575	
2020	0.1600	0.2250	0.3625	0.3825	1.1300	
2021	0.3675	0.2475	0.5300	0.5800	1.7250	
2022	0.7575	0.9400	0.9700	1.1800	3.8475	
2023	0.6400	0.2600	0.2700	0.5700	1.7400	
2024	0.8200	2.4800	3.7100	4.9300	11.9400	
2025	0.0000	0.0000	0.0000	0.0000	0.0000	

# NVDA Return on Equity

Nvidia



## NVDA Return on Equity Detail

Sum of ROE	Quarter				
Year	Q1	Q2	Q3	Q4	
1999	0.0%	0.0%	0.0%	0.0%	0.0%
2000	29.8%	67.3%	63.4%	40.4%	
2001	41.9%	45.7%	36.3%	37.7%	
2002	34.4%	32.1%	27.6%	30.6%	
2003	35.5%	29.7%	15.6%	10.7%	
2004	3.0%	4.9%	10.7%	7.5%	
2005	7.4%	5.5%	7.2%	9.0%	
2006	12.4%	17.9%	20.4%	22.6%	
2007	22.9%	23.4%	24.1%	25.6%	
2008	26.1%	29.4%	32.6%	34.5%	
2009	34.9%	22.3%	15.1%	-1.2%	
2010	-16.2%	-16.0%	-14.1%	-2.7%	
2011	10.5%	9.4%	8.0%	8.7%	
2012	8.0%	16.9%	18.5%	15.9%	
2013	13.1%	11.6%	11.6%	12.5%	
2014	12.7%	12.9%	10.3%	9.5%	
2015	11.1%	12.5%	13.7%	14.2%	
2016	14.4%	12.4%	13.8%	13.8%	
2017	15.7%	21.1%	24.7%	32.4%	
2018	37.9%	43.7%	44.2%	46.1%	
2019	54.7%	58.3%	59.3%	49.3%	
2020	37.8%	28.7%	23.3%	25.9%	
2021	29.1%	27.9%	28.8%	29.8%	
2022	33.4%	40.4%	42.0%	44.8%	
2023	42.0%	34.4%	26.4%	17.9%	
2024	18.9%	40.2%	69.2%	91.5%	
2025	0.0%	0.0%	0.0%	0.0%	