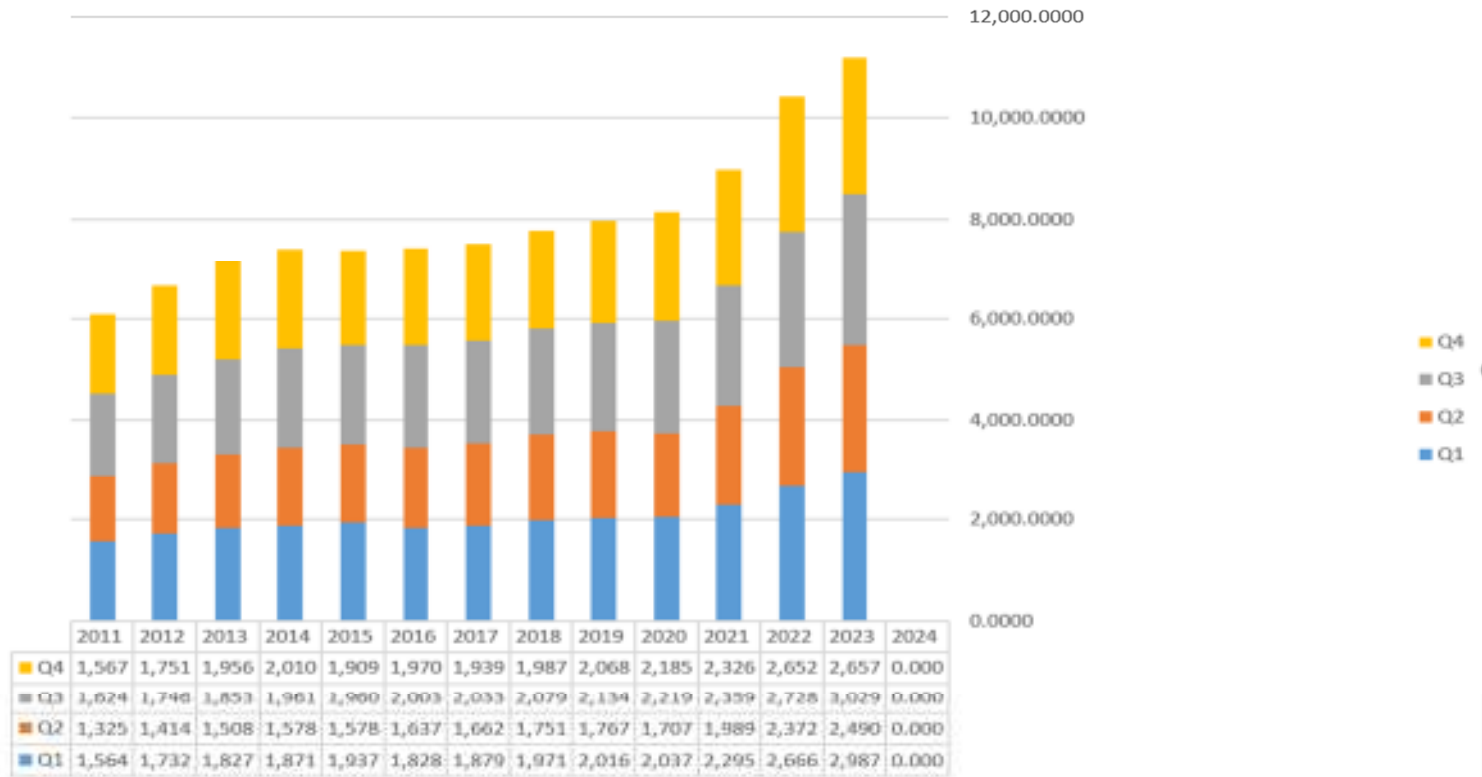


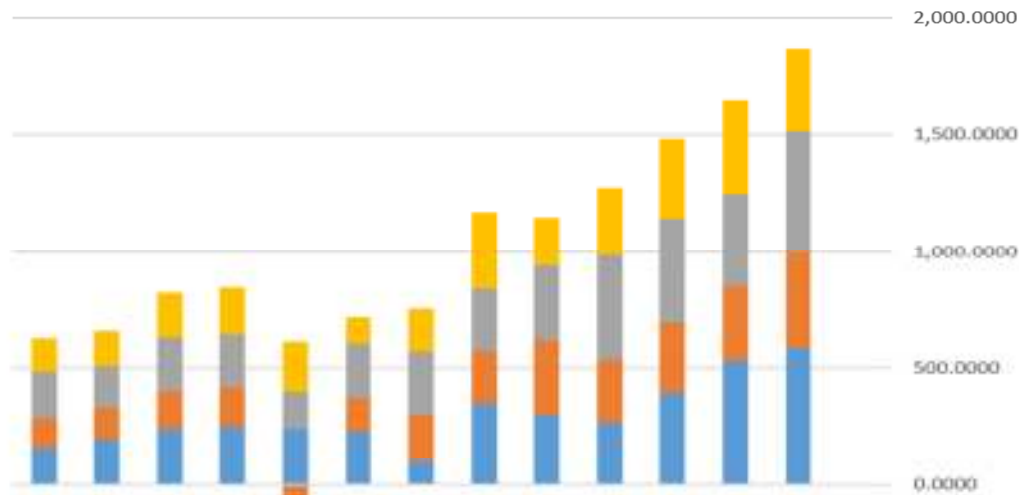
Sales

Hershey Chocolate



Net Income (quarters stacked)

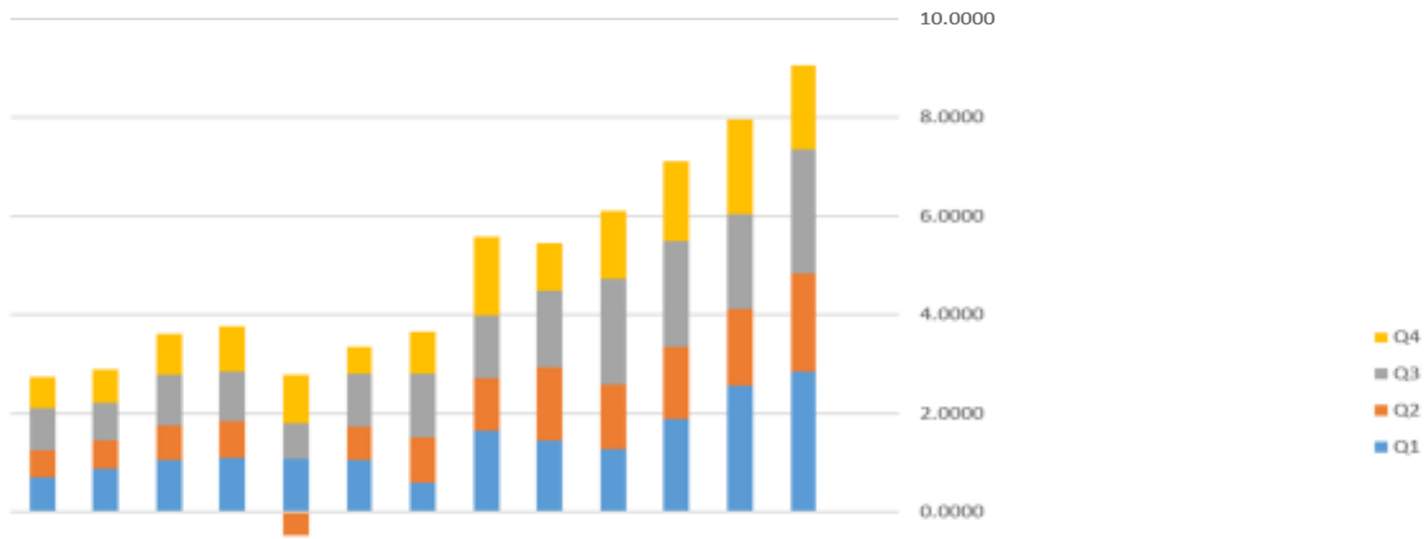
Hershey Chocolate



	2011	2012	2013	2014	2015	2016	2017	2018	2019	2020	2021	2022	2023	2024
Q4	142.1	149.8	186.0	202.5	213.3	116.8	181.5	331.6	204.5	201.3	339.7	396.2	349.0	0.000
Q3	196.6	176.7	232.9	223.7	154.7	227.4	274.0	265.4	325.1	447.2	444.9	399.4	518.5	0.000
Q2	130.0	135.6	159.5	168.1	(99.9)	145.9	202.7	223.3	313.1	268.0	301.2	315.5	406.9	0.000
Q1	160.1	198.6	241.9	252.4	244.7	229.8	98.24	350.7	303.8	268.7	396.8	533.4	587.1	0.000

Share Earnings (quarters stacked)

Hershey Chocolate

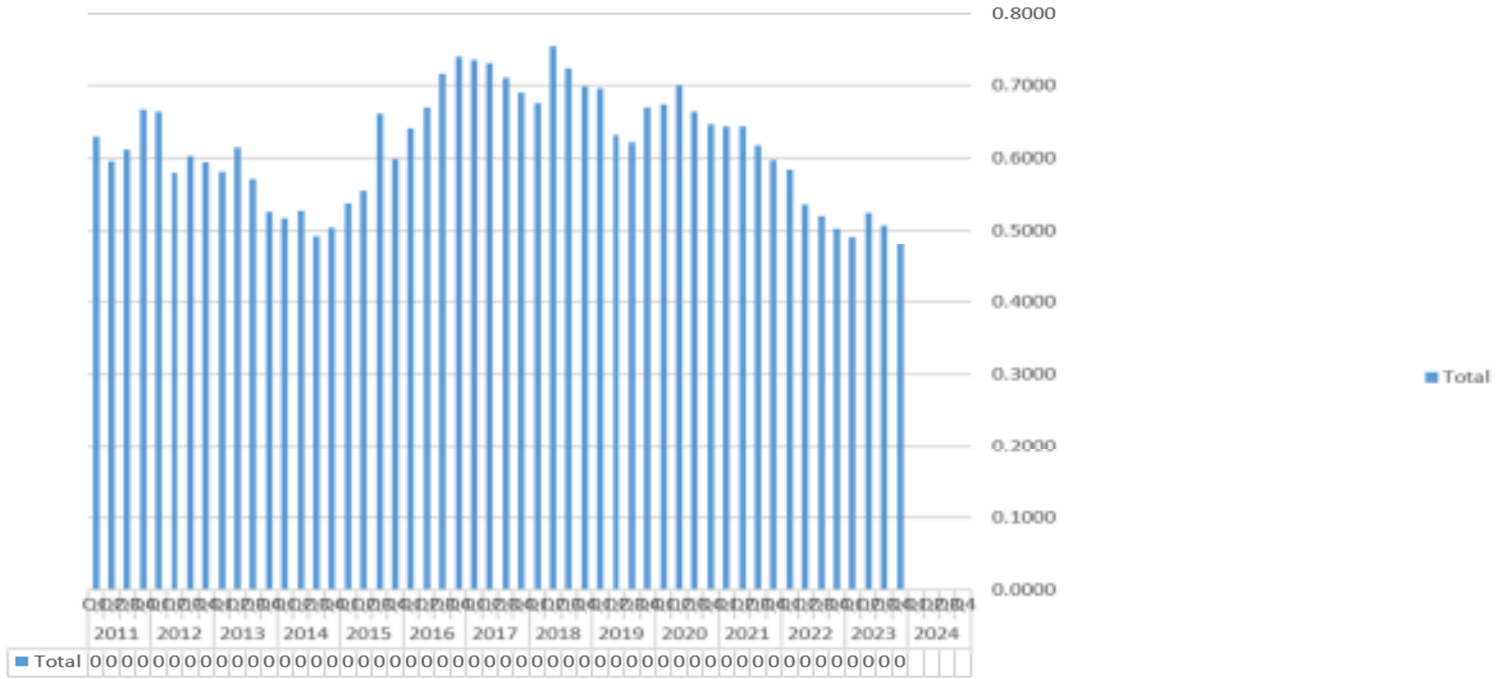


	2011	2012	2013	2014	2015	2016	2017	2018	2019	2020	2021	2022	2023	2024
Q4	0.620	0.660	0.820	0.910	0.990	0.540	0.850	1.600	0.990	1.390	1.620	1.920	1.700	0.000
Q3	0.860	0.770	1.030	1.000	0.700	1.060	1.280	1.250	1.540	2.140	2.140	1.940	2.520	0.000
Q2	0.560	0.590	0.700	0.750	(0.47)	0.680	0.950	1.080	1.480	1.290	1.450	1.530	1.980	0.000
Q1	0.700	0.870	1.060	1.110	1.100	1.060	0.580	1.650	1.450	1.290	1.900	2.570	2.850	0.000

(2.0000)

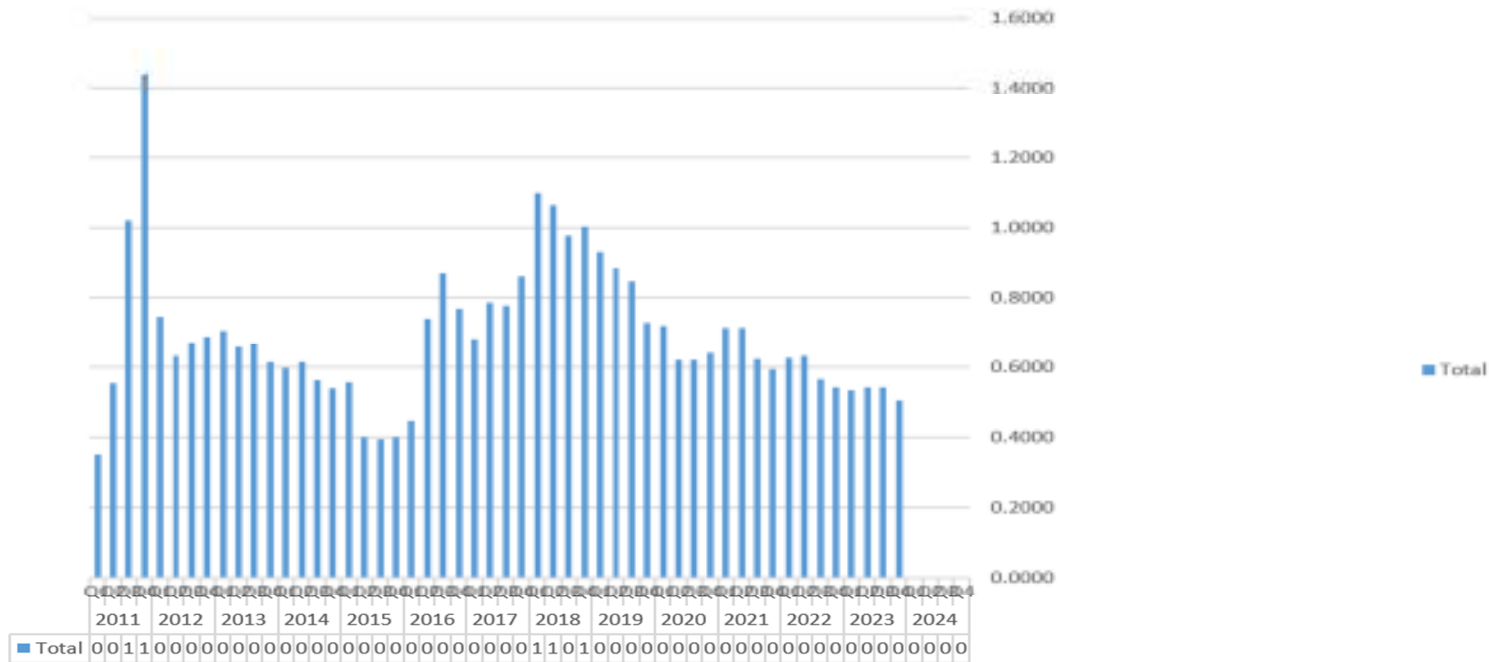
% LT Debt

Hershey Chocolate



Return on Equity

Hershey Chocolate



Dividends

Hershey Chocolate

